

SMARTFOX

ENERGY METER 3-ph

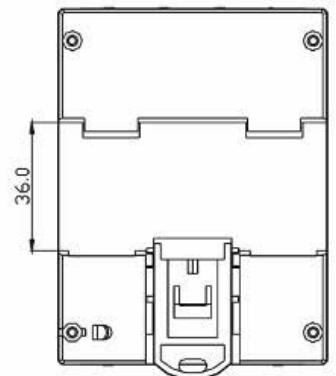
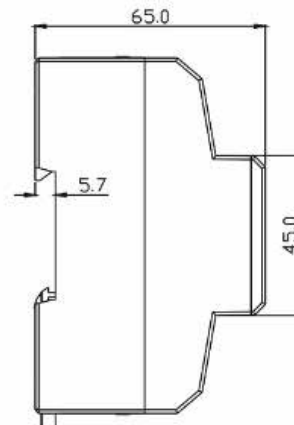
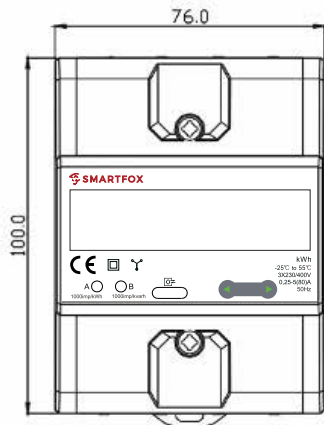
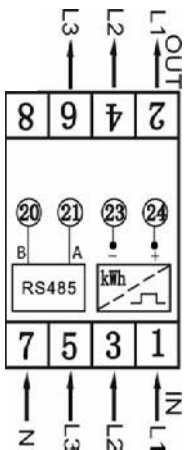
Three-phase meter (80A) with RS485 & S0 interface



EN

Data sheet

The SMARTFOX Energy Meter is a device to measure and monitor the electricity consumption of a three-phase network. The measured values are shown on an LCD display. Via RS485 (Modbus RTU) or S0-Interface the Energy Meter can be linked to a SMARTFOX Pro or SMARTFOX Meter device. You can connect generators (PV inverter, hydropower station...) or consumers (heat pumps, car chargers...) to display the values in the monitoring system my.smartfox.at.

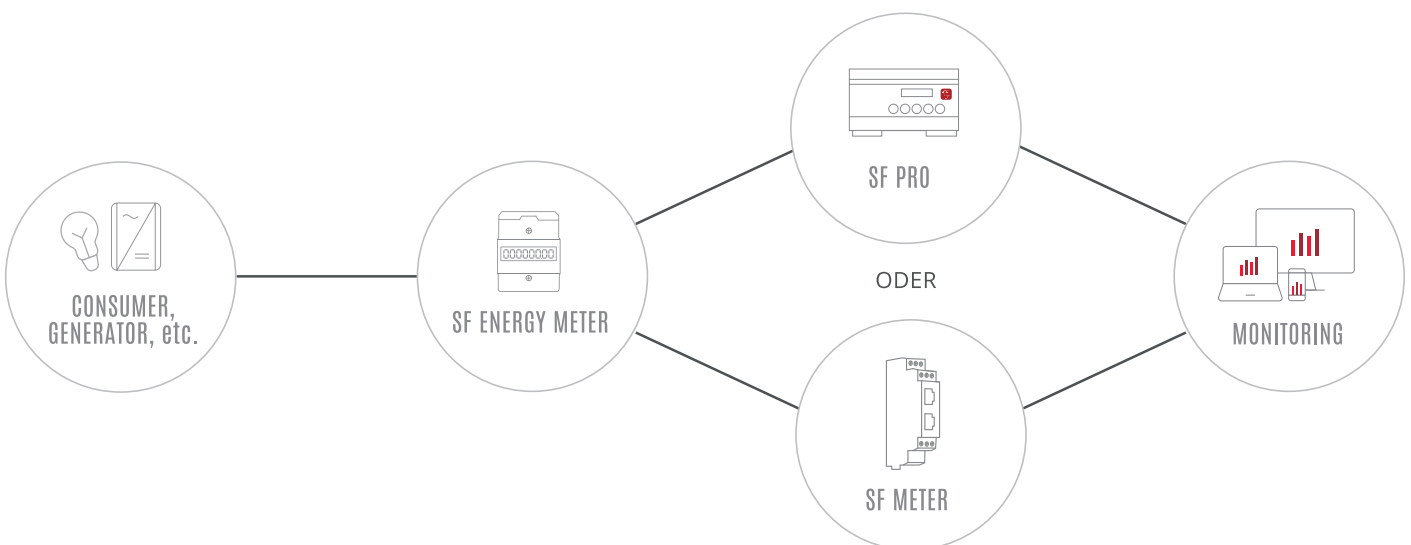



Technical specifications

Conformity	2014/32/EU
Norm	IEC62052-11, IEC62053-21, EN50470-1/3
Rated voltage / frequency	3x230/400V, 50Hz
Starting current	0,02A
Min. current	0,25A
Base current	5A
Max. current	80A
Accuracy class	B
LCD	LCD 6+2 = 123456.12
Working temperature	-25~55°C
Own consumption	≤8 VA, ≤0,4 W
Maximum humidity	≤75%
Pulse length	90 ms (modular)
Pulse output voltage range	12-27VDC
Pulse output current	≤ 27mA
Materials	PBT / PC
Protection level	IP51
Max. cross-section of wires	16 mm ²
Installation	DIN Schiene TH-35 / DIN rail
Width	76,11mm (TE 4)
Weight	0,425kg

Type	
Meter constant	1000
Meter constant settings	1 / 10 / 100 / 1000
Pulse output S0 open-type collector	JA
IR Port	JA
RS485, Modbus-RTU	JA
Memory support	EEPROM

Measuring mode	
Active and reactive power	x
Four-quadrant, Active and reactive power in both directions	x



 Follow us on facebook & instagram!

 smartfox_energiemanagement