



SMARTFOX

Product Catalog

— EN





Contents

SMARTFOX Pro	4
SMARTFOX Pro Light	6
SMARTFOX Pro Charger 2	8
SMARTFOX Hot Water	10
SMARTFOX Monitoring	13
SMARTFOX Licenses	15
SMARTFOX Accessories	16
FAQ & Contact	20



Visit our Homepage
smartfox.at



Innovation Technologie

With our extensive experience in renewable energies, we know the enormous potential of creating energy efficiency in systems. That's why we specialize in developing the best possible solutions for our customers using the latest technologies, coupled with our expertise and innovative mindset.

Customer satisfaction and responsible resource usage are central to our philosophy. By incorporating highly efficient and sustainable components, we aim to make a meaningful contribution to the generations and emerging technologies of tomorrow.

Hermann Buchsteiner
Managing Director

Matthias Fischbacher
Managing Director



SMARTFOX Pro 2

The High-End Energy Management System



1 SMARTFOX current transformer 80A closed



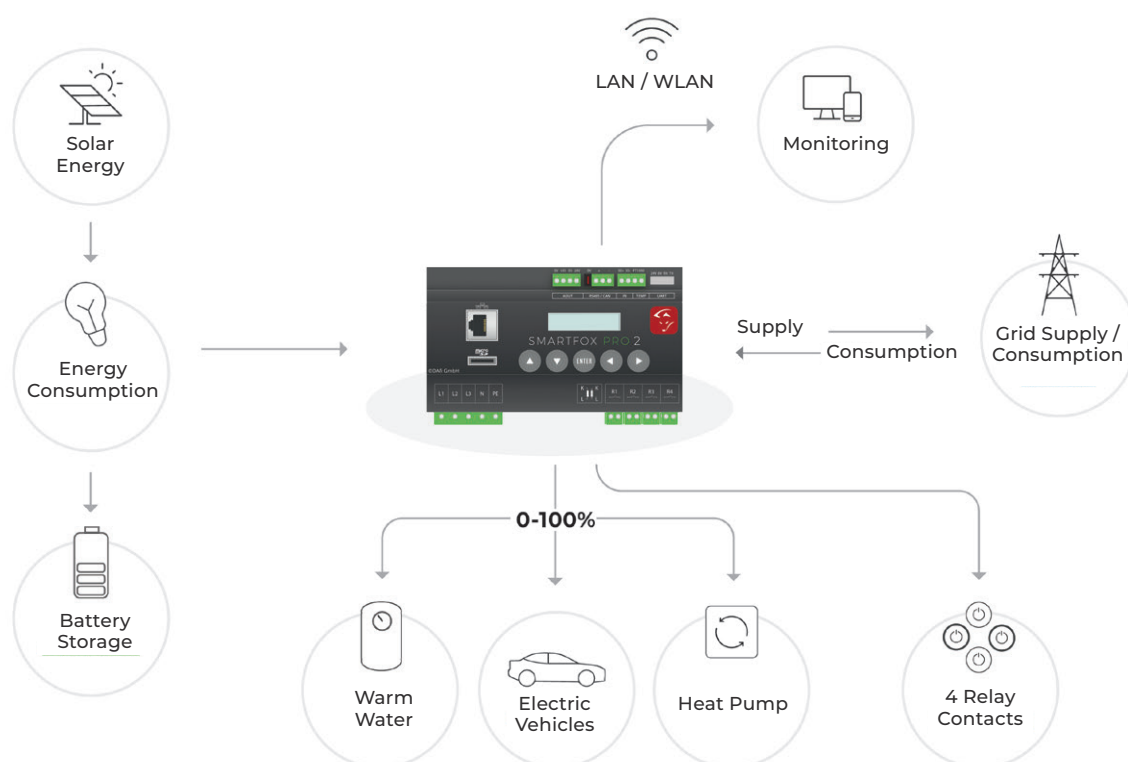
2 SMARTFOX current transformer 100A divisible



Through its intelligent technology, SMARTFOX Pro controls the loads within the system and maximizes the self-consumption rate of your photovoltaic system when there is a surplus.

A wide range of connection options brings the greatest possible efficiency to your system. An essential element to maximize self-consumption is the use of devices such as boilers (heating elements), heat pumps, electric vehicles, infrared heaters and energy storage systems. When solar energy is not used directly, these options provide ideal energy storage in the form of water or electricity. The energy manager can be integrated into both new and existing systems. The WLAN interface enables easy set-up and the energy manager is completed with high-resolution monitoring & an app.

Functional Overview SMARTFOX Pro 2



Technical data

Dimensions [W/H/D]	147mm x 90mm x 58mm (8HP)
Rated current	80A 100A or via additional converter 4995A
Power supply	3 x 230V/400VAC 50Hz
Self-consumption	4W
Display	2-line display
Analog outputs	1 x 24VDC 1 x 0/4-20mA 1 x 0/1-10V
Switching outputs	4x normally open relay 5A/250VAC
Interfaces	S0 Input CAN RS485 UART
Communication	WLAN 100 Mbits/s Ethernet LAN
Temperature input	PT1000

Options	EAN / Art. Nr.
1. SMARTFOX Pro 2 energy manger, incl. 80A current transformer ¹	0767523866383
2. SMARTFOX Pro 2 energy manager, incl. 100A current transformer divisible ¹	0767523866390
3. SMARTFOX Pro 2 – 3Y energy manger, inkl. 80A current transformer ²	0796554799063
4. SMARTFOX Pro 2 – 3Y energy manger, inkl. 100A current transformer divisible ²	0796554799070



¹ For standard energy managers, we provide monitoring indefinitely.

² Premium monitoring is free for the first three years. Afterward, a license can be purchased. Even after the three years, the live view and access to the settings remain available, and the full functionality of the device is maintained.

SMARTFOX Pro Light

The „Compact“ Energy Manager

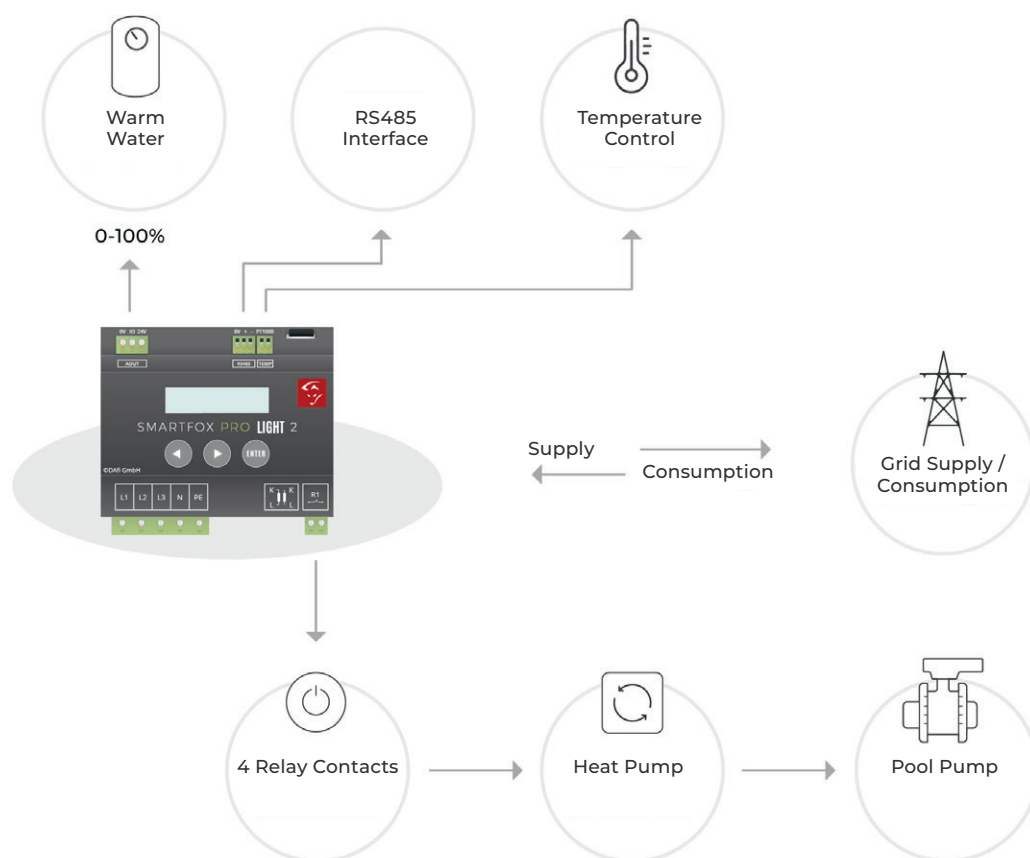


1 SMARTFOX current transformer 80A closed



SMARTFOX Pro Light is the perfect solution for customers who need a compact energy management system for **water heating**. In addition to the analog output, SMARTFOX Pro Light has a PT1000 interface, a relay and an SD memory card. A real-time clock is implemented in the software, which can be used to program a forced release for the heating rod. This ensures hot water generation even during bad weather. With the PT1000 interface, a minimum temperature that should be maintained and a maximum temperature that should only be reached with excess energy can be set.

Functional Overview SMARTFOX Pro Light



Technical data

Dimensions [W/H/D]	98mm x 90mm x 58mm
Rated current	80A 100A or via additional converter 4995A
Power supply	3 x 230V/400VAC 50Hz
Self-consumption	4W
Display	2-line Display
Analog outputs	1 x 24VDC 1 x 0/4-20mA
Switching output	1x normally open Relais 5A/250VAC
Temperature input	PT1000
Accessories supplied	Current transformer 80A 100A SD-card
Interface	RS485 (Currently no function)

Options	EAN / Art.No.
1. SMARTFOX Pro Light 2, incl. 80A current transformer	0767523866376



SMARTFOX Pro Light does not offer live monitoring. Data evaluation via SD card is possible.

SMARTFOX Pro Charger 2



The SMARTFOX Pro Charger 2 offers fast and efficient charging with a 7 m charging cable² (type 2), 11 kW rated power and automatic 1-/3-phase switching.

Its versatile interfaces (LAN, WLAN, RS485³) and support for common communication protocols enable flexible integration. Preparation for bidirectional communication in accordance with ISO 15118-20³, as well as an integrated load management system for up to five charging stations, makes it future-proof.

With selectable charging modes such as surplus charging (100% solar power), grid charging, and target charging and RFID user authentication³, the charging station provides both flexibility and security. It is suitable for indoor and outdoor use, compatible with SMARTFOX Pro Series energy managers, and can be easily set up via the integrated Wi-Fi access point or the SMARTFOX App.

A backlit display, LED status indicators, and a robust housing ensure ease of use and durability. In high-quality colour variants, the charging station combines functionality with elegant design.

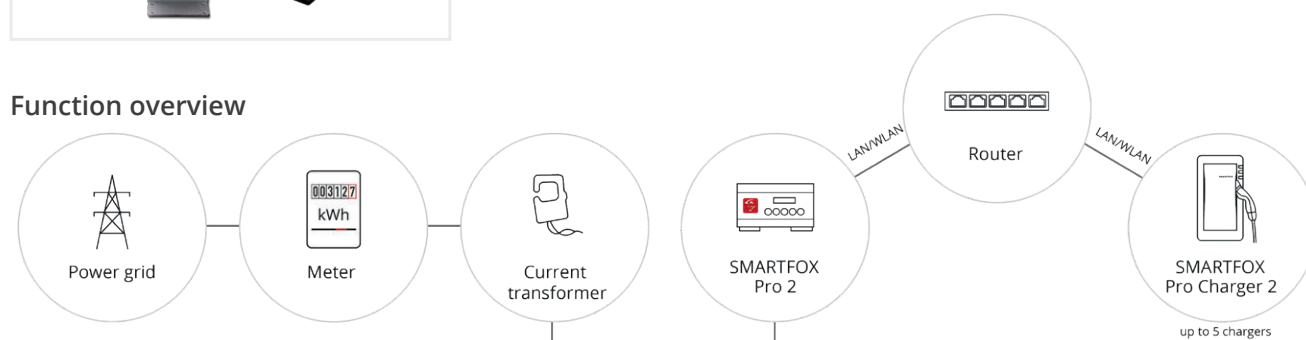
Compatible Accessories



Pedestal for wallbox

The pedestal for the SMARTFOX Pro Charger 2 allows for flexible, free-stand-ing installation of the charging station. It is available in two versions: stain-less steel for a modern, timeless look and black for a subtle, elegant design. Thanks to its robust and weather-resistant construction, it is perfectly suited for outdoor use.

Function overview



Technical data

Article Number	0796554799049	0796554799032	0796554799193	0796554799186
Front Color	dark grey (gloss)	silver (matt)	light brass (matt)	green metal (matt)
Housing Color	black			
Charging Cable	Integrated 7m, Type 2 Connector ²			
Rated Power	11kW			
Charging Station Dimensions	Charging Station Dimensions			
Charging Station Weight	5.3 kg (incl. 7m charging cable) ²			
Display	Illuminated display & LED status indicator			
Interfaces (Control)	Ethernet RJ45 - LAN, WLAN, RS485			
Communication	Modbus TCP, Modbus RTU ³ , EEBUS ³ , OCPP ³			
Phase Switching	Automatic 1/3-phase switching integrated ⁴			
Charging Modes	Selectable via 3x buttons on the charging station (2 fixed, 1 customizable) or via APP / Web portal ⁴			
Access Protection ¹	RFID (User Authentication) ³			
Load Management	Power reduction incl. single-phase monitoring (house connection) for up to 5 charging stations ⁴			
§14a	Power reduction according to §14a (DE) 4.2kW ⁴			
Commissioning & Updates	Locally via WLAN access point / via web portal my.smartfox.at / APP			

Options	EAN / Art. No.
1. SMARTFOX Pro Charger 2 Grey Edition, 11kW, incl. licence, 7 m cable ² , type 2 (exkl. SMARTFOX Pro energy manager)	0796554799049
2. SMARTFOX Pro Charger 2 Light Brass Edition, 11kW, incl. licence, 7 m cable ² , type 2 (exkl. SMARTFOX Pro energy manager)	0796554799193
3. SMARTFOX Pro Charger 2 Green Metal Edition, 11kW, incl. licence, 7 m cable ² , type 2 (exkl. SMARTFOX Pro energy manager)	0796554799186
4. SMARTFOX Pro Charger 2 Silver Edition, 11kW, incl. licence, 7 m cable ² , type 2 (exkl. SMARTFOX Pro energy manager)	0796554799032
5. Black pedestal, compatible with the SMARTFOX Pro Charger 2	0796554799216
5. Stainless steel pedestal, compatible with the SMARTFOX Pro Charger 2	0796554799209

Attention: The minimum charging power for electric vehicles with a Type 2 connector is standardized (EN 62196). Electric vehicles charge continuously starting from 1.4kW (1-phase, 6A) or 4.3kW (3-phase, 6A). In order to achieve this, the photovoltaic system must be capable of producing significantly more than the vehicle's minimum charging power.

¹ Available for order at a later date

² 7 m charging cable – at least 6.75 m usable (clamping range & manufacturing tolerances)

³ Available at a later date via software update

⁴ Function only usable in combination with a compatible SMARTFOX energy manager

SMARTFOX Pro Heater

The SMARTFOX Pro Heater offers the all-in-one solution for water heating. It is the ideal addition to your SMARTFOX energy manager and is available in four different output classes: 3K, 4,5K & 6K.

The heating element can be used to heat heating and drinking water in enameled tanks. The integrated temperature sensor ensures sufficient hot water even in bad weather and a hygiene function (legionella). The integrated performance measurement provides a clear display in the free My SMARTFOX monitoring system. The app gives you access to the system while on the move and allows you to control it remotely if required.

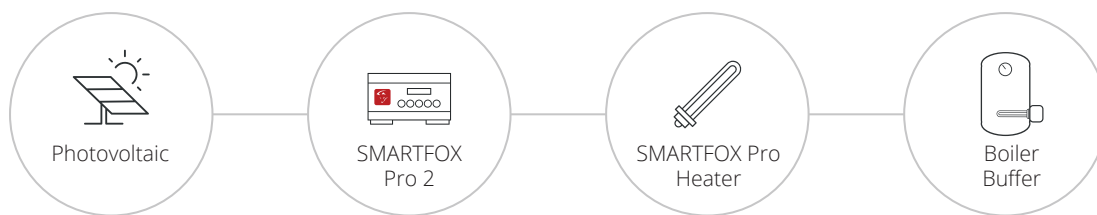


Product information:

- 15 stages
- Integrated temperature sensor
- Control thermostat (10°C to 80°C) & safety thermostat
- Fixed temperature 60° (= EMERGENCY ON function)
- No power controller required
- Stand-alone operation possible
- Ideal addition to stepless consumers (e.g. battery, e-charging stations, etc.)
- Integrated power measurement
- Compatible with our SMARTFOX Pro and SMARTFOX Pro 2 energy managers via RS485 (4-20mA interface in preparation)
- Four power classes: 3kW, 4.5kW & 6kW
- Remote update capability



Functional Overview



Technical data

Art. No.	0796554799001	0796554799018	0767523866338	0796554799025 ¹
Heat output	3kW	4,5kW	6kW	9kW ¹
Voltage	3~400V, 50Hz			
Rated current	max. 4,41A	max. 6,62A	max. 8,82A	max. 12,99A
Screw-in thread (AG)	G 1 1/2" (6/4")			
Operating pressure	max. 10bar			
Immersion depth	345mm	360mm	480mm	660mm
Unheated length	100mm			
Shell material	2.4858 - Alloy 825			
Continuous operation suitability	Yes			
Field of application	Hot water boiler & buffer tank (suitable for drinking water)			
Installation	Horizontal			
Electrical Connection	5-pin plug with nominal cross-section of 1.5mm², incl. 5m connection cable			
Communication Connection	5-pin plug with nominal cross-section of 0.5mm² (min. 0.4mm² / max. 0.75mm²), incl. 5m connection cable			
Interfaces	RS485			
Temperature sensor	integrated (class B)			
Type	Temp. controller (TR) + safety temp. limiter (STB)			
Control temperature (TR)	10-80°C			
Display	Status display via LED			
Operating mode	With energy manager: 15-stage surplus control, minimum temperature maintenance, weekly timer, hygiene function, frost protection & fixed temperature, etc. Stand-alone operation: frost protection & fixed temperature possible			
Compatible energy managers	SMARTFOX Pro & SMARTFOX Pro 2			
Monitoring	Via SMARTFOX Energiemanager (my.smartfox.at & APP)			

Options	EAN / Art. No.
SMARTFOX Pro Heater 3K	0796554799001
SMARTFOX Pro Heater 4,5K	0796554799018
SMARTFOX Pro Heater 6K	0767523866338
SMARTFOX Pro Heater 9K ¹	0796554799025

¹ available for order at a later time

SMARTFOX Screw-In Heater

The heater can be used for heating and drinking water in glass lined buffer tanks and containers. In combination with the SMARTFOX Pro energy manager and power controller, the screw-in heater can be used for continuous surplus utilization.



Technical data

Power	Voltage	Immersion depth	Unheated length	Screw-in thread. (AG)	Surface load
3kW	1~230V	345mm	100mm	G 1 1/2" (6/4")	12,6W/cm ²
4,5kW	3~400V	360mm	100mm	G 1 1/2" (6/4")	11,0W/cm ²
6kW	3~400V	480mm	100mm	G 1 1/2" (6/4")	11,0W/cm ²
9kW	3~400V	660mm	100mm	G 1 1/2" (6/4")	11,0W/cm ²

Screw head	
Width across flats	SW60
Material	Brass
Operating pressure	max. 10bar
Radiator	
Shell material	2.4858 - Alloy 825
Connection housing	
Material	Polycarbonat / RAL7021
Protection class	IP64
Cable gland	M20x1,5 / polyamide PA6, clamping range 6-12mm ²
Electrical connection	Screw terminal nominal cross section 6mm ² (min. 0,5mm ² / max. 10mm ²)
Temperature control	
Type	Temp.-controller (TR) + protection temp. limiter (STB)
Control temperatur (TR)	0-85°C
Shutdown temp. (STB)	110°C-10K
Direct switching	direct (load)

Options	EAN / Art. No.
SMARTFOX Screw-In Heater 3kW 230V	0791732486414
SMARTFOX Screw-In Heater 4,5kW 400V	0791732486421
SMARTFOX EScrew-In Heater 6kW 400V	0791732486483
SMARTFOX Screw-In Heater 9kW 400V	0791732486537



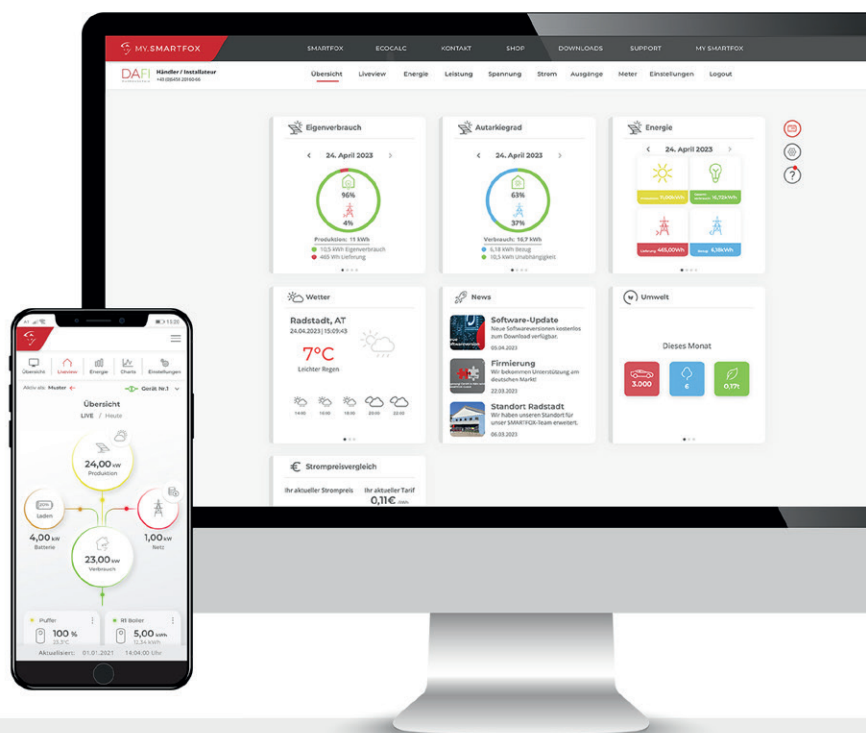
my.smartfox Monitoring & App

Our platform offers a detailed overview of the system's energy generation including energy consumption as well as extensive evaluation options for optimizing your selfconsumption rate. The system is particularly interesting for installers & dealers because they can carry out maintenance, updates, and adjustments to customers' systems remotely.

The new dashboard offers you a clear display of self-consumption, degree of self-sufficiency, energy values, weather, SMARTFOX news, and much more. The widgets can be customized and expanded to provide a personalized view.

The live-view displays the system including all energy consumers in real time. Plant production, grid supply/purchase, and the consumption of individual devices such as buffers, boilers, heat pumps, or e-charging stations can be viewed and controlled as required (e.g. e-car charging mode). Furthermore, a comprehensive analysis system is available to you in order to continuously optimize yield and consumption and to identify any "power-guzzlers".

- ✓ **Dashboard**
- ✓ **Live-View**
- ✓ **Remote access for installers**
- ✓ **Energy overview & mail**
- ✓ **Savings at a glance**
- ✓ **Available as app**



Remote access for installers

Our system provides installers with secure remote access to perform maintenance, updates and adjustments on customer installations, avoiding on-site appointments and thus saving time and costs. The clear display of all devices and the possibility to perform analyses and remote updates make the system an effective tool for installers and dealers.

SMARTFOX UART / RS485 Converter

With the UART / RS485 Converter, the SMARTFOX Pro gains an additional RS485 interface, allowing the integration of more external devices.



Technical data

Dimensions (W/H/D)	90,3mm x 18mm (1TE) x 56,2mm
Weight	38g
Weight including accessories & packaging	110g
Power supply	5-30 Vdc
Self-consumption	0,5 W (20mA @ 24V)
Reverse polarity protection	Integrated until 100 VDC
Serial interface	1x RS485 (Baud rate 9600bps)
Certificates	CE
Mounting	DIN rail TH-35
Temperature range (in operation)	-40°C to +85°C
Humidity (in operation)	5% - 95% RH
Housing material	Plastic
Accessories (contents of packaging)	UART cable for connection with SMART-FOX PRO and PRO 2, 4-pin plug (RS485 connection), quick guide

Options	EAN / Art. Nr.
SMARTFOX UART / RS485 Converter	0796554799179

SMARTFOX S0 Monitoring

SMARTFOX S0 Monitoring is the easiest way to achieve comprehensive system monitoring.

Through its 5 x S0 meters it is possible to measure all your hot water, electricity and heating oil consumption. It can be integrated into any existing system, regardless of whether a SMARTFOX Pro energy manager is already installed. Thus, SMARTFOX S0 Monitoring allows you to monitor and visualize your operating costs and demand. In addition, it can measure the energy production of your photovoltaic system. The data is available at my.smartfox.at.



Technical data

Dimensions (W/H/D)	90mm x 57mm x 17,5mm
Weight	6g
S0 counter inputs	5
Power supply	24VDC
Self-consumption	1W
Interface	2 port ethernet switch 10MBit
Protection class	IP54
Operating temperature range	-25°C to +40°C
Mounting	Series installation for meter 1TE

Options	EAN / Art. No.
SMARTFOX S0 Monitoring	0791732486506



We recommend the use of S0 meters with at least 1000 pulses/unit. Compatible with SMARTFOX Energy Meter 2.

SMARTFOX Energy Meter 2

The SMARTFOX Energy Meter is a 3-phase, up to max. 80A, energy meter with a RS485 & S0 interface.

The energy meter is DIN rail suitable, can be used to display electrical energy of 3-phase AC in a direct system and can be read by SMARTFOX Pro & SMARTFOX S0 Monitoring.



Technical data

Power Supply	3x230V/400V~, 50/60Hz
Display	LCD (number of digits 6+2=000000,00kWh)
Current	Max. 80A
S0 interface	1000 Imp/kWh
RS485 interface	Modbus RTU

Options	EAN / Art. No.
SMARTFOX Energy Meter 2	0796554799155

SMARTFOX Software Licenses

With the **All-in-One Key**, five inverters¹, one battery¹, one heat pump¹, and the e-mobility platform are unlocked for unlimited use – completely free of charge. This means that when purchasing a SMARTFOX Pro Energy Manager, only a one-time investment is required, with no ongoing costs.

The **Car Charger Key**² offers enhanced functionality at a lower price. A Car Charger Key is required to integrate compatible charging stations, unlocking all five charging points. For SMARTFOX charging stations, the Car Charger Key is not needed.

Licenses	EAN / Art. Nr.
¹ SMARTFOX All in One Key	0796554799162
² SMARTFOX Car Charger Key	0791732486568
³ Premium monitoring license 1 year – 3Y energy manager	0796554799087
³ Premium-Monitoring Lizenz 3 Jahre – 3Y Energiemanager	0796554799094

³ Premium monitoring is free for the first three years. After that, a license can be purchased. Even after the three years, Live View and access to the settings remain available, and the full functionality of the device is maintained.



¹, ² For all compatible devices according to the download instructions.



SMARTFOX Temperature Sensor PT1000

The maintenance-free sensor measures the temperature in the range of -35 to +105°C and is ideal for universal and cost-effective temperature measurement.

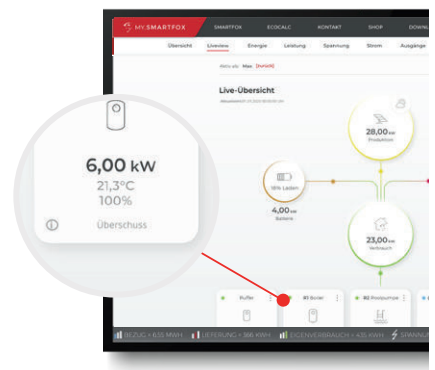
The moisture-proof rolled stainless steel protective sleeve (IP65) protects the internal measuring unit from moisture. The cable sensor is supplied with a PVC connection cable and can be used, for example, as a storage tank sensor, buffer sensor or immersion sensor. Use the SMARTFOX temperature sensor with our energy manager for minimum temperature maintenance. Even in bad weather, hot water is ensured. The temperature is displayed live in the monitoring.



Technical data

Sensor type	PT1000
Measuring range	-35°C bis +105°C
Circuit type	2-wire
Connected load	PVC cable
Cable length	5m
Sleeve length	50mm

Options	EAN / Art. No.
SMARTFOX Temperature sensor PT1000, 5m	0767523866178



SMARTFOX Flansch

Flange plate, 180mm, stainless steel incl. seal

Adapter flange plate including gasket for the use of SMARTFOX heating elements (screw-in heaters, Pro Heater series with 6/4" or 1 1/2" connection) in a boiler / buffer with 180mm flange connection.



Technical data

Socket incl. Thread	For heating elements with a 6/4" (1 1/2") connection
Dimensions D x H	Ø 180 mm x 52 mm
Drilling	Ø 13,6 mm, 8x holes
Weight	1,30 kg
Material	Chrome-nickel steel (X5CrNi18-10)
Material Thickness	6mm
Operating Pressure	max. 10bar
Application	Hot water boilers & buffer storage tanks (flange 180mm, 8x holes)
Certificates, Standards	CE, DIN ISO3834-2, EN 10029, EN10131

Options	EAN / Art. No.
SMARTFOX flange plate 180mm, stainless steel	0767523866185

SMARTFOX Booster Light 9K

The SMARTFOX Booster Light 9K enables excess photovoltaic energy to be used specifically for heating water.

Existing heating elements or SMARTFOX screw-in heaters can be easily controlled, which significantly increases the self-consumption rate. The compact device allows three-stage switching of resistive loads with a total output of up to 9 kW and is ideal as a supplement to systems with battery storage. The control (4-20 mA) and power supply are carried out directly via the SMARTFOX energy manager. Thanks to tool-free mounting on the DIN rail, installation is completed in no time at all.



Technical data

Dimensions [W/H/D], weight	90 x 50,5 x 62 mm (3TE), 116g
Compatible energy manger	All SMARTFOX energy managers with analog output (AOUT)*
Compatible heating elements	SMARTFOX immersion heater 4,5kW / 6kW / 9kW 3-phase immersion heaters in star configuration up to 9 kW (Neutral conductor connection required)
Display	Status LEDs: 1× Power (green) & 3x Relay switching status (yellow)
Protection class	IP20
Certificates / Standards	CE, 2014/30/EU (EMV-Richtlinie), 2014/35/EU, RoHS

* compatible after software release for the respective product series

Options	EAN / Art. No.
SMARTFOX Booster light	0796554799223

SMARTFOX Changeover Relay 16A

SMARTFOX changeover relay 3-changeover contact, 16A per contact switchable, coil voltage 230VAC.

Ideal for use with SMARTFOX “analog relay switching” or “2nd heating rod function” (switching via temperature sensor).

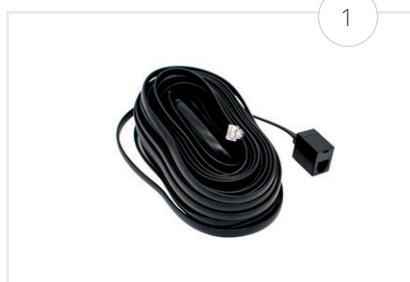


Technical data

Number of contacts	3 changeover relays
Dimensions [W]	40mm (2TE)
Mounting bracket	DIN rail
Rated operational current per contact	16A
Rated / switching voltage	230/400V (50Hz)
Control circuit voltage	5 230V (50Hz)
Standards	EN 61810-1
Protection class	IP20

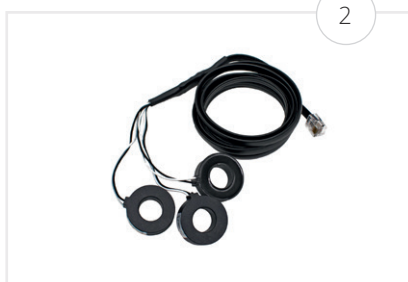
Options	EAN / Art. No.
SMARTFOX changeover relay, 3 changeover contacts, 16A	0767523866192

Current Transformer



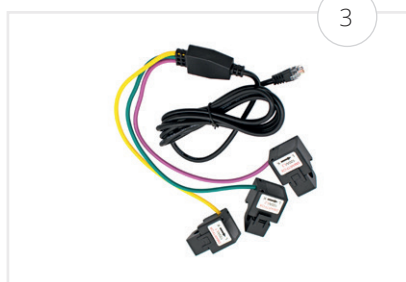
SMARTFOX transducer extension 15m

For the existing SMARTFOX Pro & SMARTFOX Pro Light energy manager.



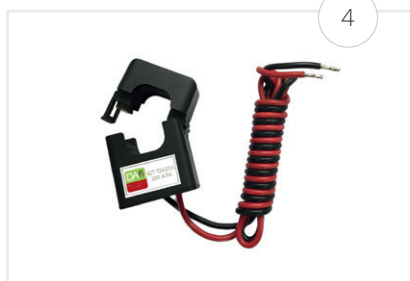
SMARTFOX current transformer 80A closed

For SMARTFOX Pro and SMARTFOX Pro Light energy manager (with RJ12 connector).



SMARTFOX current transformer 100A divisible

For SMARTFOX Pro and SMARTFOX Pro Light energy manager (with RJ12 connector).



SMARTFOX current transformer 200/5A divisible

For measuring currents up to 200A.



SMARTFOX current transformer 500/5A divisible

For measuring currents up to 500A.

Technical data

Product according to picture	4	5
Primary/secondary current	200A/5A	500A/5A
Minimum primary power	5VA	10VA
Rated voltage secondary	0,33 VAC	0,33 VAC
$U_{iso}/U_{primary}$ max.	600 VAC / 5000 VAC	600 VAC / 5000 VAC
Operating temperature	-15°C to +60°C	-15°C to +60°C
Frequency range	50 - 400Hz	50 - 400Hz
Connection lines secondary	105cm / 2,5mm ²	105cm / 2,5mm ²
Measurement tolerance	Class 1	Class 1
Certification	RoHS / CE	RoHS / CE

Options	EAN / Art. No.
1. SMARTFOX transducer extension 15m	0791732486520
2. SMARTFOX current transformer 80A closed for SMARTFOX Pro & Pro Light EMS	0791732486629
3. SMARTFOX current transformer 100A divisible for SMARTFOX Pro energy manager	0791732486674
4. SMARTFOX current transformer 200A / 5A divisible (1 pcs.) with cable	0791732486490
5. SMARTFOX current transformer 500A / 5A divisible (1 pcs.) with cable	0791732486650

Merchandise on request



SMARTFOX
Pro Charger 2



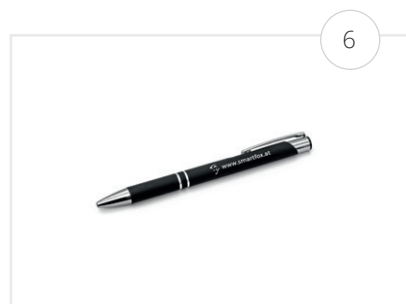
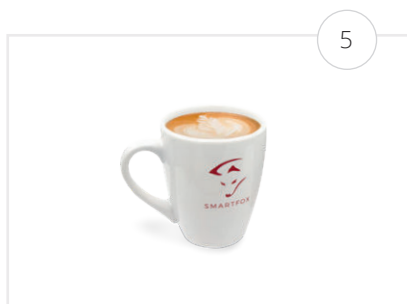
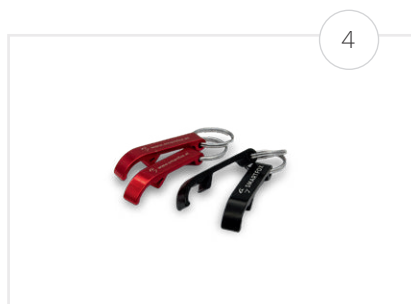
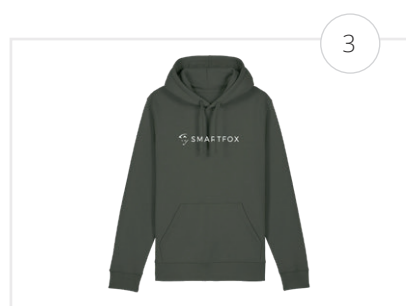
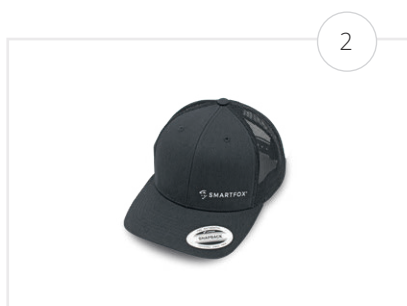
SMARTFOX
Energy management



SMARTFOX
Product catalog



SMARTFOX
Installer brochure



Send us your request to verkauf@smartfox.at

Designation
1. SMARTFOX Sunglasses
2. SMARTFOX Trucker Cap, Dark grey
3. SMARTFOX Hoodie
4. SMARTFOX Bottle opener
5. SMARTFOX Coffee cup
6. SMARTFOX Pen

SMARTFOX Contact

Headquarter Austria



SALES MANAGER SWITZERLAND

DI Helmut Pernthaner

verkauf@smartfox.at

+43 (0) 720 302 555



SALES MANAGER AUSTRIA

Peter Tescher

verkauf@smartfox.at

+43 (0) 720 302 555

Business hours: Mo-Th 8.00 - 12.00 & 13.00 -17.00 Uhr | Fr 8.00 - 12.00 Uhr

SMARTFOX GmbH - Germany



DISTRIBUTION CENTER

sales@smartfox.de

+49 (0) 2236 48095-00

Business hours: Mo-Fr 8.00 - 16.30 Uhr

Proven technology that lets you get the most out of solar energy. Our technology is not only powerful, but also extremely reliable. The intelligent SMARTFOX system has already proven itself over 20,000 times in practice and is waiting to make your photovoltaic system more efficient too. We will be happy to answer any questions you may have about our system. You can find the most frequently asked questions at:

www.smartfox.at/support



Many thanks to our partners!



Austria

Headquarters:

DAfi GmbH
Niedernfritzerstraße 120
A-5531 Eben im Pongau

Tel +43 (0)720 302 555
Mail verkauf@smartfox.at
Web www.smartfox.at

Logistics Center Austria:

DAfi GmbH
Niedernfritzerstraße 118
A-5531 Eben im Pongau

Tel +43 (0)720 302 555
Mail verkauf@smartfox.at
Web www.smartfox.at

Germany

Location Germany:

SMARTFOX GmbH
Wankelstraße 40
D-50996 Köln

Tel +49 (0)2236 48095-00
Mail sales@smartfox.de
Web www.smartfox.de



[Smartfox_Energiemanagement](https://www.instagram.com/Smartfox_Energiemanagement)



[Smartfox-Energiemanagement](https://www.facebook.com/Smartfox-Energiemanagement)



[SMARTFOX Energiemanagement](https://www.linkedin.com/company/SMARTFOX-Energiemanagement)